



**HIGH PRESSURE
EQUIPMENT COMPANY**

HYDRAULIC POWER PACKS



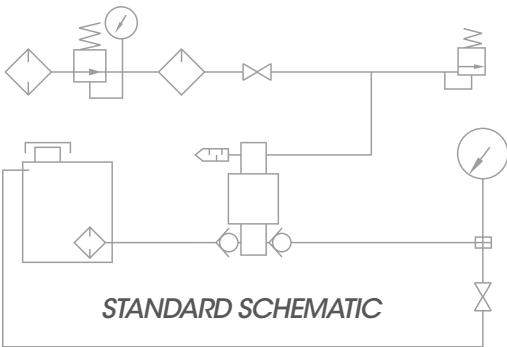
5065

1

2

3

See tables below



1 PUMP SERIES

5W	5000 Series lubricated pump
6W	6000 Series lubricated pump

2 PUMP MODEL DESIGNATION - MAX PRESSURE

5W SERIES		6W SERIES	
015	2,625 psi	030	6,000 psi
018	3,075 psi	050	9,700 psi
020	3,625 psi	080	14,400 psi
030	5,800 psi	100	18,000 psi
040	7,000 psi	151	23,700 psi
045	8,600 psi	201	32,300 psi*
060	10,700 psi	301	45,800 psi*
080	14,000 psi		
100	18,750 psi		
160	27,500 psi		
250	42,500 psi*		

3 ADDITIONAL EXTRAS

TB	Tank By-Pass
IV	Isolation Valve
CRO	Chart Recorder Outlet
SST	Stainless Steel 316 Tank
USB	USB Transducer
ATEX	ATEX certified

Example

5065-5W060-TB-SST

5000W060 series pump c/w tank
by-pass and stainless steel tank.

* Recommended for continuous duty at pressures upto 30,000 psi.
Intermittent duty above 30,000 psi

☎ 1-800-289-7447

✉ SALES@HIGHPRESSURE.COM

🌐 WWW.HIGHPRESSURE.COM

2955 W. 17TH STREET,
ERIE, PENNSYLVANIA 16505

PERFECT UNDER PRESSURE

TYPICAL PRESSURE & CONNECTION SIZES

5W SERIES	MWP PSI	MWP BAR	AIR INLET	GAUGE RANGE	OUTLET CONNECTION
015	2,625	181	½" NPT (F)	0-3,000 psi / bar	½" NPT (F)
018	3,075	212	½" NPT (F)	0-5,000 psi / bar	½" NPT (F)
020	3,625	250	½" NPT (F)	0-5,000 psi / bar	½" NPT (F)
030	5,800	400	½" NPT (F)	0-10,000 psi / bar	½" NPT (F)
040	7,000	483	½" NPT (F)	0-10,000 psi / bar	LF6
045	8,600	593	½" NPT (F)	0-10,000 psi / bar	LF6
060	10,700	738	½" NPT (F)	0-15,000 psi / bar	LF6
080	14,000	966	½" NPT (F)	0-20,000 psi / bar	HF4
100	18,750	1,293	½" NPT (F)	0-20,000 psi / bar	HF4
160	27,500	1,897	½" NPT (F)	0-30,000 psi / bar	HF4
250	42,500	2,931	½" NPT (F)	0-50,000 psi / bar	HF4

MAXIMUM AIR CONSUMPTION AT ZERO HYDRAULIC PRESSURE - 28 scfm

6W SERIES	MWP PSI	MWP BAR	AIR INLET	GAUGE RANGE	OUTLET CONNECTION
030	6,000	414	½" NPT (F)	0-10,000 psi / bar	LF6
050	9,700	669	½" NPT (F)	0-15,000 psi / bar	LF6
080	14,400	993	½" NPT (F)	0-20,000 psi / bar	LF6
100	18,000	1,241	½" NPT (F)	0-20,000 psi / bar	LF6
151	23,700	1,634	½" NPT (F)	0-30,000 psi / bar	HF4
201	32,300	2,228	½" NPT (F)	0-40,000 psi / bar	HF4
301	45,800	3,159	½" NPT (F)	0-50,000 psi / bar	HF4

MAXIMUM AIR CONSUMPTION AT ZERO HYDRAULIC PRESSURE - 56 scfm

Dimensions	18" (450mm) wide x 14" (340mm) depth x 21" (515mm) high All units are pressure tested prior to despatch
Tank By-pass	½" BSPP (F)
Chart Recorder Port	HF4 plugged
Stainless Steel Tank	316 SS, Mesh in tank filter, Sight glass.
USB Transducer	Range to suit pump max pressure. 400 bar, 1500 bar, 2000 bar, 3000 bar, 4000 bar



High Pressure Equipment | A Graco Company

☎ 1-800-289-7447

✉ SALES@HIGHPRESSURE.COM

🌐 WWW.HIGHPRESSURE.COM

2955 W. 17th STREET,
ERIE, PENNSYLVANIA 16505



PERFECT UNDER PRESSURE