

# T-Series Pump Power Packs

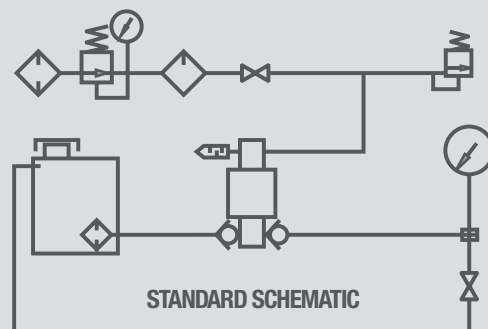


**High Pressure Equipment**  
A GRACO Company



HiP packaged hydraulic power systems using our new high performance T-Series pumps are an excellent method to deliver high pressure hydraulic power to your field location. These turn-key systems only require a non-lubricated air supply to generate hydraulic power up to 68,000 psi and are designed for plain water or oil service. We offer a range of standard power packs that are typically in-stock or available with a short lead time, as well as custom power systems to satisfy your specific requirements. All HiP power packs are factory pressure tested prior to shipping.

T-Series Pump Power Packs can be used for a wide variety of high pressure applications such as bolt tensioning, pressure testing, power pressing, jacking, lifting, hydraulic power units, proof testing components, valve actuation and many more.



## Ordering Information

**Part Number Example: 5065T-T6036-TB-SST** This is a T60 series pump with a maximum outlet pressure of 36,500 psi and options of a tank bypass and 316 stainless steel tank.

### 5065T

All Models

### Pump Series

T60	6" Motor Series Pump
T75	7-1/2" Motor Series Pump

### T6036

### Pump Model/Max Pressure

T60 Series		T75 Series	
03	3,200psi	05	5,000psi
05	4,800psi	07	7,400psi
06	6,300psi	10	10,000psi
10	10,000psi	16	15,750psi
12	12,500psi	19	19,500psi
16	16,250psi	25	25,500psi*
25	25,250psi	39	39,500psi*
36	36,500psi	57	57,100psi
58	58,000psi	68	68,000psi

### TB-SST

### Additional Extras

TB	Tank Bypass
IV	Isolation Valve
CRO	Chart Recorder Outlet
SST	Stainless Steel 316 Tank
USB	USB Transducer
ATEX	ATEX certified

\* Optimum seal life is achieved at less than 80 cycles per minute. Intermittent duty above 30,000psi.

# T-Series Pump Power Packs

## Typical Pressure & Connection Sizes

T60 Series	Maximum Working Pressure psi      bar		Air Inlet	Gauge Range	Outlet Connection
03	3,000	221	1/2" NPT(F)	0-5,000psi/bar	1/2" NPT(F)
05	4,800	331	1/2" NPT(F)	0-10,000psi/bar	1/2" NPT(F)
06	6,300	434	1/2" NPT(F)	0-10,000psi/bar	1/2" NPT(F)
10	10,000	689	1/2" NPT(F)	0-15,000psi/bar	HF9
12	12,500	862	1/2" NPT(F)	0-15,000psi/bar	HF9
16	16,250	1120	1/2" NPT(F)	0-20,000psi/bar	HF9
25	25,250	1740	1/2" NPT(F)	0-30,000psi/bar	HF4
36	36,500	2516	1/2" NPT(F)	0-40,000psi/bar	HF4
58	58,000	3998	1/2" NPT(F)	0-70,000psi/bar	HF4

T75 Series	Maximum Working Pressure psi      bar		Air Inlet	Gauge Range	Outlet Connection
05	5,000	344	1/2" NPT(F)	0-10,000psi/bar	1/2" NPT(F)
07	7,400	510	1/2" NPT(F)	0-10,000psi/bar	1/2" NPT(F)
10	10,000	689	1/2" NPT(F)	0-15,000psi/bar	1/2" NPT(F)
16	15,750	1085	1/2" NPT(F)	0-20,000psi/bar	HF9
19	19,500	1344	1/2" NPT(F)	0-30,000psi/bar	HF9
25	25,500	1758	1/2" NPT(F)	0-30,000psi/bar	HF9
39	39,500	2723	1/2" NPT(F)	0-50,000psi/bar	HF4
57	57,100	3936	1/2" NPT(F)	0-70,000psi/bar	HF4
68	68,000	4688	1/2" NPT(F)	0-80,000psi/bar	HF4

<b>Chart Recorder Port</b>	HF4 plugged
<b>Stainless Steel Tank</b>	316 SS, mesh in tank filter, sight glass
<b>USB Transducer</b>	Range to suit pump max pressure. 400bar, 1500bar, 2000bar, 3000bar, 4000bar
<b>Standard Seal Material</b>	NBR
<b>Optional Seal Materials</b>	EPR available upon request FKM, FFKM available for pumps with maximum pressures of 16,250 or less

To learn more about **T-Series Pump Power Packs**, visit us online, email [pumps@highpressure.com](mailto:pumps@highpressure.com) or give us a call today at **800-289-7447**.



**High Pressure Equipment**

**A GRACO Company**

**[www.HighPressure.com](http://www.HighPressure.com)**